



**ALASKA DIVISION OF HOMELAND SECURITY &
EMERGENCY MANAGEMENT**



SITUATION REPORT 21-337 • DECEMBER 03, 2021

Toll-Free 1.800.478.2337

Anchorage Area 907.428.7000

SEOC 907.428.7100

<p><u>SEOC Preparedness Level</u> Level 1 – Normal Operations</p>	<p>http://ready.alaska.gov</p>	<p><u>National Terrorism Advisory System:</u> Read the updated NTAS Bulletin here</p>
<p><u>Maritime Security (MARSEC)</u> Level:1-Minimum Appropriate Security Measures</p>	<p>WHO Novel Coronavirus Pandemic (COVID-19): 2019 Novel Coronavirus</p>	<p><u>Alaska Military Installation Force Protection Level:</u> FPCON Bravo</p>

(Significant changes from previous situation reports are in red.)

Significant Issues:

None

Threat Level Changes:

None

State of Alaska Department of Health and Social Services (DHSS)

DHSS is now leading the State of Alaska COVID-19 Recovery through Department Operations, supported by SEOC and other state departments as required.

For current COVID-19 information, see:

<https://covid19.alaska.gov/>

<https://www.cdc.gov/coronavirus/2019-ncov/index.html>

NTAS BULLETIN

To read current or expired advisories, click the link below:

<https://www.dhs.gov/national-terrorism-advisory-system>

Travel Alerts and Conditions

For current driving conditions dial 511 or link to <http://511.alaska.gov/>

Barry Arm Landslide / Tsunami Risk

For the latest information on the Barry Arm Landslide and Tsunami risk, click here:

[DGGs Barry Arm Landslide and Tsunami Hazard](#)

Recent Earthquakes

USGS Earthquake Information: <http://earthquake.usgs.gov/>

National Tsunami Warning Center: <http://tsunami.gov/>

Alaska Volcanoes

Great Sitkin Alert Level: **Watch** and Aviation Color Code: **Orange**

Pavlof Alert Level: **Watch** and Aviation Color Code: **Orange**

Semisopchnoi Alert Level: **Watch** and Aviation Color Code: **Orange**

For Alaska Volcano updates, go to: <https://www.avo.alaska.edu/>

Air Quality Index (AQI) Advisories

A Stage 1 Alert is in effect for the Fairbanks area until 1:00 P.M. tomorrow.

A Stage 2 Alert is in effect for the North Pole area until 1:00 P.M. tomorrow.

For the most up to date Air Quality Index Advisories:

<http://dec.alaska.gov/Applications/Air/airtoolsweb/Home/Index>

Spills of Oil and Hazardous Substances

The ADEC Spill Prevention and Response page is located at:

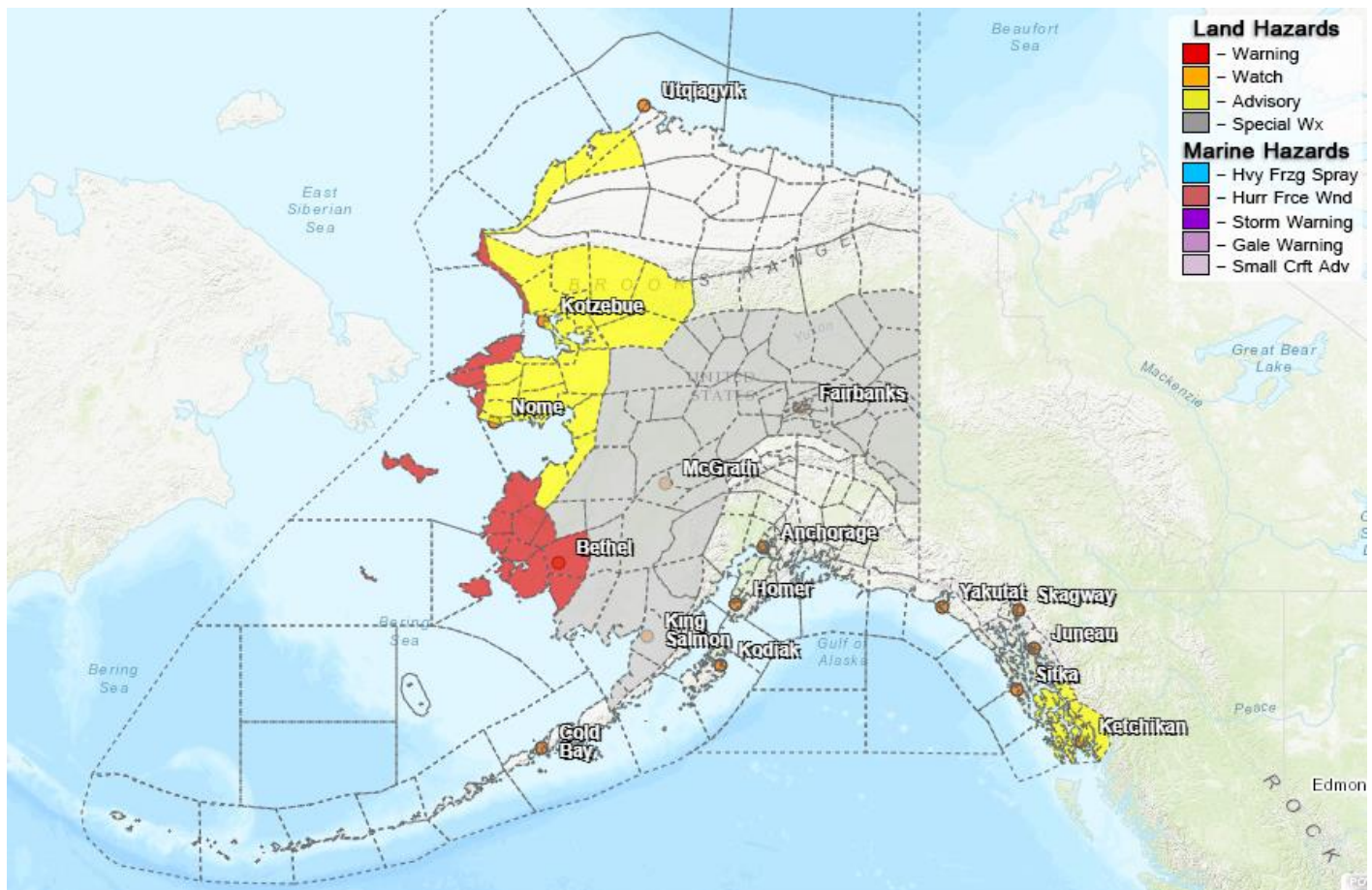
<http://dec.alaska.gov/spar/ppr/spill-information/response/>

Alaska Cyber Security Information

State Employees may sign up for cyber security notifications and alerts at

<https://oit.alaska.gov/security>

Significant Weather:



Blizzard Warnings are in effect for the following areas:

- Yukon Delta west of Mountain Village until 3:00 P.M. today.

- Kuskokwim Delta coastal area until 4:00 P.M. today.
- St. Lawrence Island and the Bering Strait Coast until 9:00 P.M. today.
- Baldwin Peninsula and the Selawik Valley until 6:00 A.M. tomorrow.
- Chukchi Sea coast near Point Hope until 9:00 A.M. tomorrow

A Winter Storm Watch is in effect from this evening until Saturday afternoon for the Chukchi Sea coast for high winds and blowing snow.

Wind Chill Advisories and Warnings are in effect for the following areas:

- Kobuk and Noatak Valleys, the western Arctic coast and the northern and interior Seward Peninsula until noon today.

Winter Weather Advisories are in effect for the following areas:

- Petersburg and Wrangell until 9:00 A.M. today for 3 to 5 inches of snow accumulation.
- Craig, Hollis, Hydaburg, Ketchikan, Klawock and Thorne Bay until 6:00 P.M. today for 5 to 7 inches of snow accumulation.
- Eastern Norton Sound, Nulato Hills and the southern Seward Peninsula coast until 3:00 A.M. tomorrow for 2 to 4 inches of snow accumulation.

Special Weather Statements remain in effect for the following areas:

- Blowing snow is possible across much of southwest Alaska Saturday night through Monday.
- Interior Alaska will likely see low temperatures in the 30°F to 40°F below zero range through the weekend.
- West Coast and the western Interior. A major storm could impact the area late this weekend with high winds, heavy snowfall and water levels above the normal high tide lines in parts of Norton Sound

For more information and the most current weather, Watches / Warnings / Advisories go to:

<http://www.weather.gov/arh>

Avalanche Forecast:



There are areas near Chilkat Lake, Haines and Cordova with considerable avalanche risk. And near Valdez and along the Richardson Highway with moderate risk.

Check the Avalanche Forecast Center closest to your area for the most up to date information on avalanche potential. <https://alaskasnow.org> or <https://www.weather.gov/afc/avalancheweather>

The Next Situation Report: will be 06 December 2021. A significant change in the situation or the threat level will prompt an interim report.

This report is posted on the internet at <https://ready.alaska.gov/sitrep>. To register for email distribution, go to <http://list.state.ak.us/mailman/listinfo/dhsem.situation.report>. Direct questions regarding this report to the SEOC at 907-428-7100 or seoc@alaska.gov